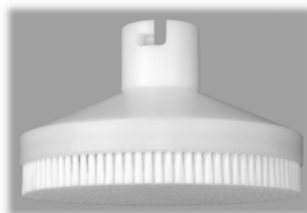


30.1 Brush plates for skimming, spreading and dedusting


Item no.	Description
E-09483	Brush plate 150 x 290 x 27 mm (for CAM M92)

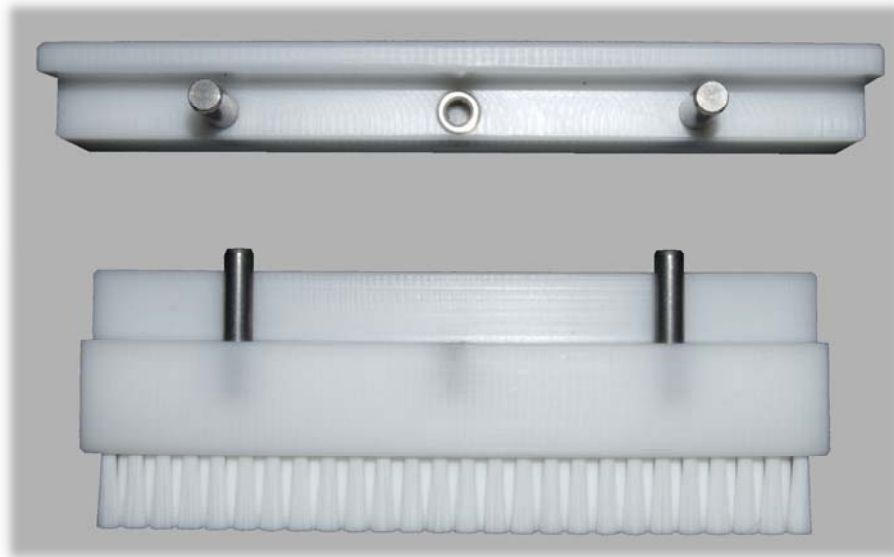
30.2 Rotation brushes for skimming, spreading and dedusting


Item no.	Description
E-12490	Roller brush Ø 70 x 320 mm (for Bosch TLT 2800)
E-09783	Roller brush Ø 60 x 460 mm (for IMA C 80)
E-10388	Roller brush Ø 84 x 414 mm (for IMA C 80)
E-09782	Roller brush Ø 60 x 270 mm (for IMA C 90)
E-12112	Roller brush Ø 86 x 270 mm - radial (for IMA C 90)
E-12114	Roller brush Ø 86 x 270 mm - tangential (for IMA C 90)
E-08238	Roller brush Ø 82 x 290 mm (for IWKA BP 8)
E-08237	Roller brush Ø 80 x 187 mm (for IWKA BP 300)
E-09940	Roller brush Ø 80 x 346 mm (for Uhlmann 1030 MTI)

30.3 Disc brushes for skimming, spreading and dedusting


Item no.	Description
E-10053	Disc brush Ø 157 x 95.5 mm (for IMA C 90)

30.4 *Brush bracket*



Item no.

E-15058

Description

Brush bracket 50.7 x 15 x 144.6 mm, 2 guide pins Ø 6 mm, st. st. grade 304, 1 Ensat M 5 thread, st. st. grade 304

30.5 *Brush plate for hopper outlet - custom-made*



Installation position at hopper outlet

Item no.

E-18492

Description

U-shaped brush attachment for hopper 50 x 112 x 135 mm